

# Y11 GCSE Parent Information Evening



**THE BROMFORDS SCHOOL**

ACHIEVE ENRICH PREPARE

**2023-2024**

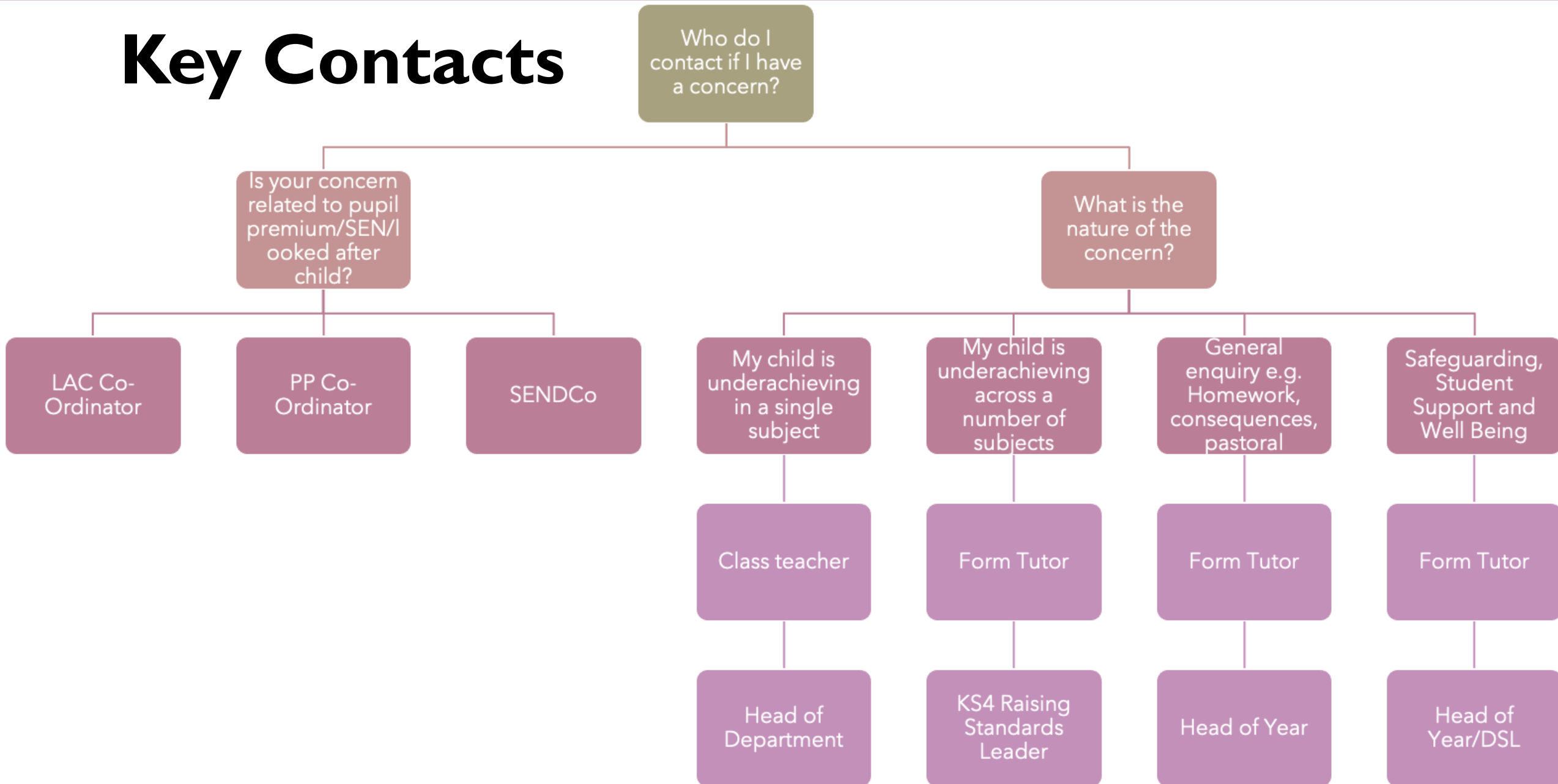
# Aims for this evening

- Provide a brief overview of the GCSE grading system and how the courses will be assessed
- Sixth Form at Bromfords
- To outline expectations of students
- To provide guidance on how you can support your child in:
  - English
  - Maths
  - Science
- Suggest ways in which parents can support students to reach their full potential in this final chapter of their GCSE study

# Key Contacts

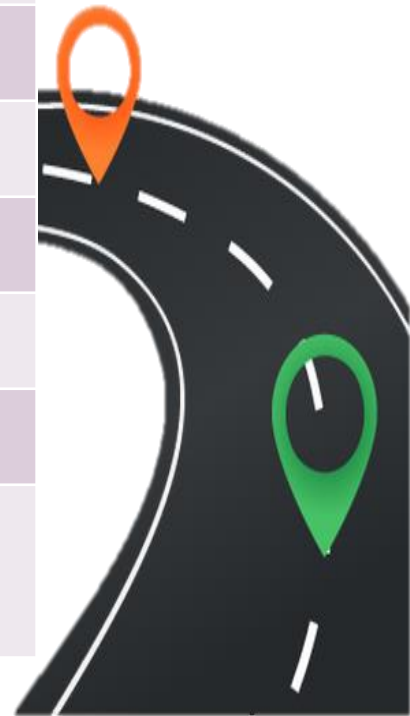
- ❖ Mrs Morgan – Head of Year 11
- ❖ Miss E Huet – Assistant Headteacher: Director of KS4
- ❖ Mr R Conway - LAC Coordinator
- ❖ Mrs E McCue – Director of KS5
- ❖ Miss K Lynch –CIAG Lead
- ❖ Ms L Tutty – Assistant Headteacher: SENDCo
- ❖ Ms N Thain – Exams Officer
- ❖ Helen Bilbey – Careers Advisor (Connexions)

# Key Contacts



# Key Events – GCSE Roadmap

<i>Date</i>	<i>Event</i>
<b>Round 1:</b> 16 <sup>th</sup> Oct – 3rd Nov 2023 <b>Round 2:</b> 29 <sup>th</sup> Jan-9 <sup>th</sup> Feb 2024	Y11 Progress Exams
11 <sup>th</sup> January 2024	Y11 Parents Eve
January 2024	Y11 Next Steps Meetings
Mid-May 2024	Written GCSE Exams Begin
June 2024	Year 11 Leavers Assembly
Mid-June 2024	Written GCSE Exams End
July 2024	Year 11 Prom
22 <sup>nd</sup> August 2024	GCSE Results Day & Sixth Form Sign-Up



# Aims for this evening

- Provide a brief overview of the new grading system and how the courses will be assessed
- Sixth Form at Bromfords
- To outline expectations of students
- To provide guidance on how you can support your child in:
  - English
  - Maths
  - Science
- Suggest ways in which parents can support students to reach their full potential in this final chapter of their GCSE study

# I-9 Grading System

New grading structure	Current grading structure
9	
8	A*
7	A
6	B
5	
4	C
<hr/>	
3	D
	E
2	
	F
1	G
U	U

The old and new GCSE grading scales do not directly compare but there are three points where they align, as the diagram shows:

- The bottom of grade 7 is aligned with the bottom of grade A;
- Standard pass is a Grade 4 and a strong pass is a Grade 5;
- The bottom of grade 1 is aligned with the bottom of grade G.

# Target Grades

- Students' KS2 scaled scores in English and Mathematics are used to generate targets in conjunction with an nationally approved organisation called the Fischer Family Trust.
- All students are set an initial target. If a student consistently meets or exceeds their target grade in a particular subject, then the target grade for that subject will be adjusted upwards so that all students have an aspirational target to continue to work towards.
- Performance compared with targets to allow progress to be monitored by students, parents and staff



# The Bromfords School Sixth Form

- Director of Key Stage 5 – Mrs El McCue
- Key Stage 5 Administrator – Mrs Karen Shaw
- Next Steps Coordinator - Mr Bunmi Dagunduro
- Form Tutors
- Subject Specialist Teachers

## Key Dates:

OPEN EVENING – 22ND NOV 2023

APPLICATIONS DEADLINE – 20<sup>TH</sup> DECEMBER 2023

# Post-16 Preparations

- All Y11 students will receive a 121 Careers Interview with Helen Bilbey from Connexions
- Young people are required to remain in school, training or work-place training until the age of 18
- Use the guidance provided in your information pack
- Contact Miss Lynch:  
[careers@bromfords.essex.sch.uk](mailto:careers@bromfords.essex.sch.uk)



# Are GCSEs important?

- **Yes!** They are important for your next steps after Year 11. Colleges, 6<sup>th</sup> forms and employers will be looking at GCSE grades when you apply.
- Usually need a pass in English and Maths to get onto a level 3 course, otherwise might have to do a level 2 course first alongside extra courses in English and Maths (or re-take GCSEs).
- Certain courses and careers will require certain GCSE grades in specific subjects.

# Higher Education

- Level 8
- Level 7
- Level 6
- Level 5
- Level 4

Doctorate/ PhD

Integrated Master's Degree

- Master's Degree
- PG Cert & PG Dip
- Honours Degree
  - Top up Honours Degree
  - Foundation Degree
  - Degree Diploma
  - Degree Certificate

Higher Apprenticeship

Degree Apprenticeship

- Higher Apprenticeship
- Higher Apprenticeship
- Higher Apprenticeship
- Higher Apprenticeship

- NVQ
- NVQ
- NVQ
- NVQ

# Secondary/ Further Education

- Level 3
- Level 2
- Level 1

A levels

T levels

BTEC

Diplomas

GCSE (grades 4 – 9)

BTEC

GCSE (grades 1 – 3)

BTEC

Advanced Apprenticeship

Intermediate Apprenticeship

NVQ

NVQ

NVQ

**Glossary**

**BTEC:** Business and Technology Innovation Council

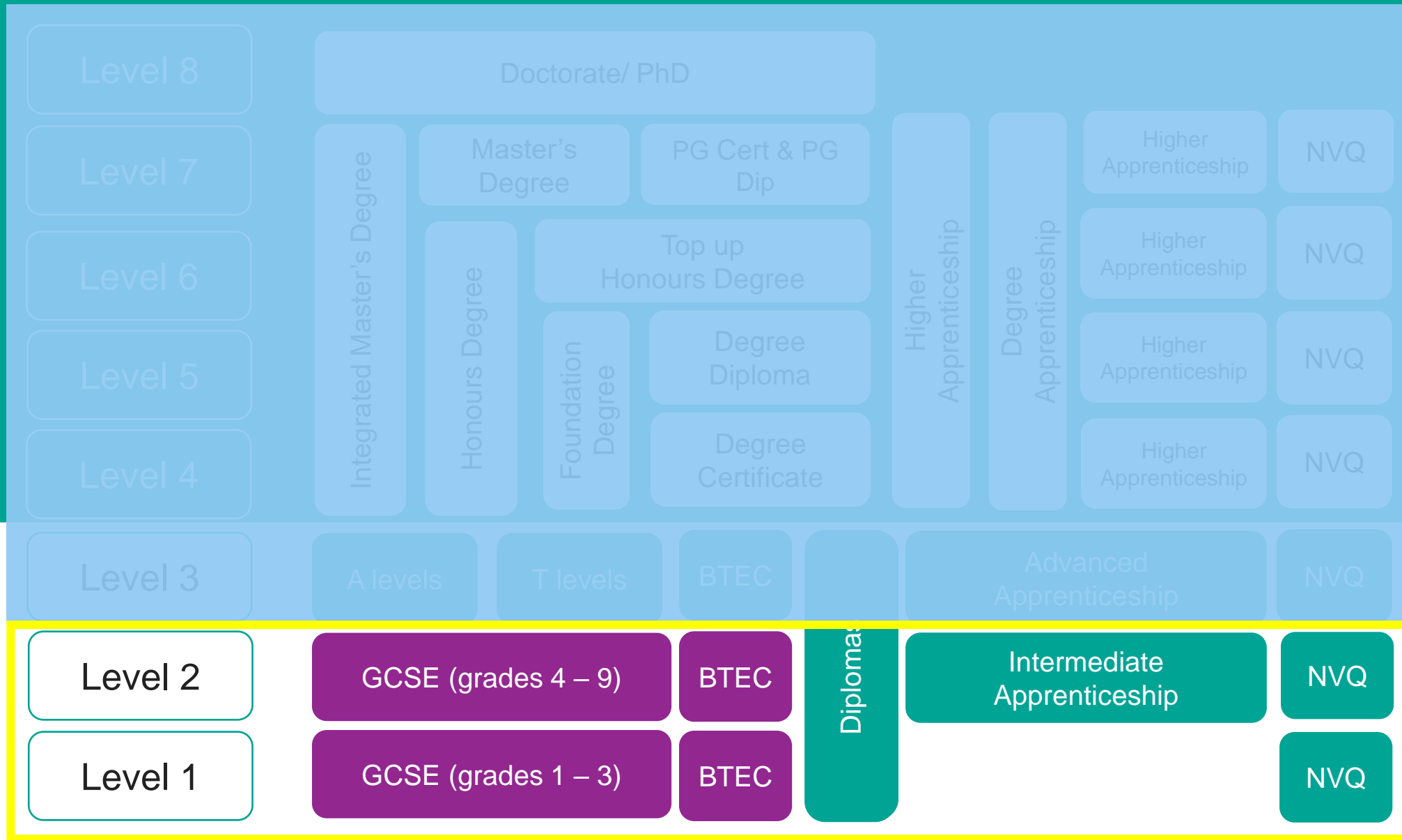
**NVQ:** National Vocational Qualification

**PG Cert:** Postgraduate Certificate

**PG Dip:** Postgraduate Diploma

# Higher Education

# Secondary/ Further Education



**Glossary**

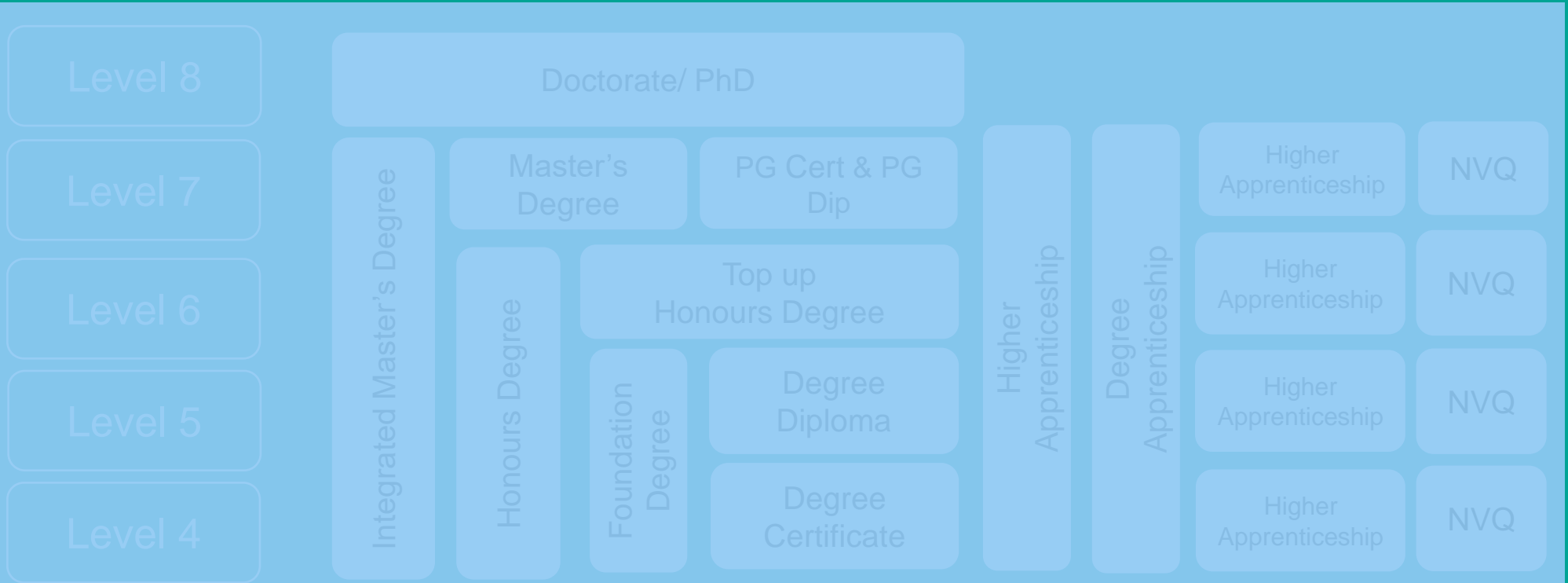
**BTEC:** Business and Technology Innovation Council

**NVQ:** National Vocational Qualification

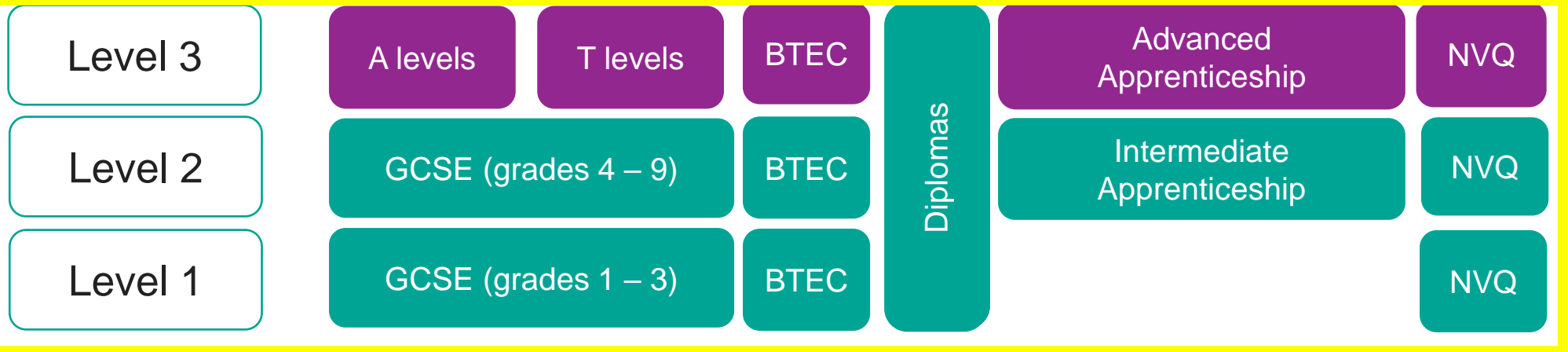
**PG Cert:** Postgraduate Certificate

**PG Dip:** Postgraduate Diploma

# Higher Education



# Secondary/ Further Education



### Glossary

**BTEC:** Business and Technology Innovation Council

**NVQ:** National Vocational Qualification

**PG Cert:** Postgraduate Certificate

**PG Dip:** Postgraduate Diploma

# Options after year 11

**A Levels**

**Level 3 BTECs**

(or other vocational qualifications)

**T Levels**

**Apprenticeships**

# Which route?

**A Levels**

**Level 3 BTECs**

(or other vocational qualifications)

**A Levels**

**T Levels**

**Apprenticeships**

Theoretical classroom-based learning. Usually study 3 subjects at sixth form or college



# What's the difference? Sixth Form vs College

Sixth Form	College
Usually academic – A Levels and some BTECs	Usually a large range of courses – A levels, BTECs and apprenticeships
Either no uniform or business dress	Usually no uniform <i>(some specific courses have one)</i>
With own age group, all studying Level 3 courses	Age 14 to adult learners, any level of course
Hundreds of students	Thousands of students
5 days per week with some study periods	Depends on course, often not full days/week
More like school structure	Less structured, sign in and out

# Which route?

**A Levels**

**Level 3 BTECs**

(or other vocational qualifications)

**Apprenticeships**

**T Levels**

**Apprenticeships**

Earn whilst you learn.  
80% on the job training,  
20% studying.

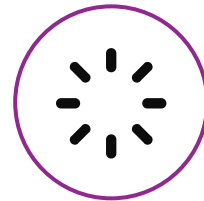
# What apprenticeships are available?



Accounting



Aviation



Horticulture



Architect



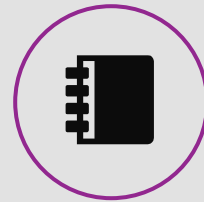
Creative & Digital



Teaching



Cyber Security



Surveying



Project management



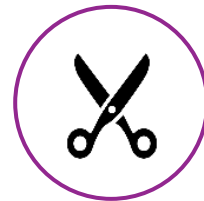
Nursing



Dental Nursing



Hospitality



Hairdressing



Legal Services



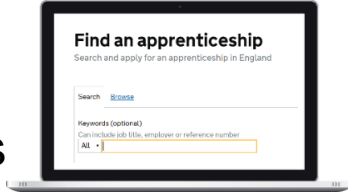
Journalism

**...and many more**

# How do you find an apprenticeship?

1

Register for apprenticeship job alerts



2

Do your research



3

Manage your alerts



4

Check entry requirements & apply



5

Contact companies

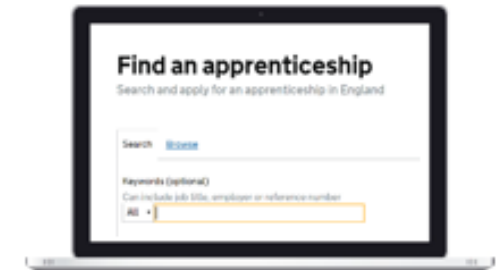


**When...**  
All year  
round

# Do your research!

## 1. Register on 'Find an Apprenticeship' for job alerts

[www.findapprenticeship.service.gov.uk/apprenticeshipsearch](http://www.findapprenticeship.service.gov.uk/apprenticeshipsearch)



## 2. Check for opportunities



[notgoingtouni.co.uk](http://notgoingtouni.co.uk)



[amazingapprenticeships.com](http://amazingapprenticeships.com)



[ratemyapprenticeship.co.uk](http://ratemyapprenticeship.co.uk)



[essexopportunities.co.uk](http://essexopportunities.co.uk)

# Things to remember...

You can apply for an apprenticeship whilst you are still at school.

To start one, you need to be:

- 16 or over by the end of the summer holidays
- living in England
- not in full-time education

Depending on the level, some apprenticeships may:

- require previous qualifications such as an English or maths GCSE
- give extra training in the English or maths skills needed so you're at the right level



# Which route?

**A Levels**

**Level 3 BTECs**

(or other vocational qualifications)

**Level 3 BTECs**

(or other vocational qualifications)

**T Levels**

**Apprenticeships**

Usually more practical work-related subjects with coursework or project work. Equivalent of 1-3 A levels depending on type.

# Which route?

**A Levels**

**Level 3 BTECs**

(or other vocational qualifications)

**T Levels**

**T Levels**

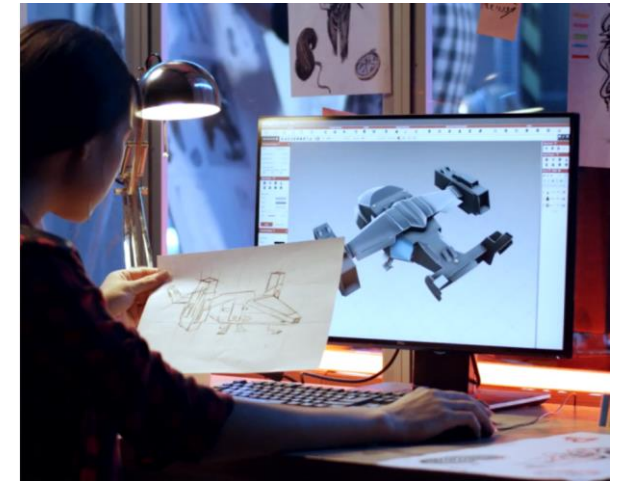
**Apprenticeships**

The equivalent of 3 A levels. 80% in the classroom, 20% on a 45-day industry placement.



# T-LEVELS

- Agriculture, Environmental and Animal Care
- Business and Administration
- Catering
- Construction (incl. design, surveying and planning)
- Craft and Design
- Digital
- Engineering and Manufacturing
- Education and Early years
- Hairdressing, Barbering and Beauty Therapy
- Health and Science
- Legal, Finance and Accounting
- Media, Broadcast and Production



# Where to study a T Level in Essex?

## T-LEVELS

[HOME](#) [ABOUT T LEVELS](#) [WHY CHOOSE T LEVELS](#) [T LEVEL SUBJECTS](#) [STUDENT STORIES](#) [FIND A T LEVEL](#)

### FIND YOUR NEAREST T LEVEL

Search for schools and colleges who are delivering T Levels

1 mile

#### **SOUTH ESSEX COLLEGE OF FURTHER AND HIGHER EDUCATION**

Basildon | SS14 3AY [How do I get there?](#)

**From September 2022 onwards:**

- Digital Production, Design and Development

[Visit their website](#)

# Comparing post 16 options

A Levels	T Levels	BTECs	Apprenticeships
Sixth form OR college	College	Sixth form OR College	College
Three or four subjects	One subject	Usually one subject	One subject
100% classroom	80% classroom 20% work placement	Some include work placements	80% employment 20% classroom
Traditional subjects, mainly exam assessed	New qualification – limited subject areas and locations	Available at Levels 2-5	Also available at Levels 2-7
← Academic		Practical →	

# Making choices

**Location**

**Facilities**

**Reputation  
and results**

**Extra-  
curricular  
opportunities**

**Careers or  
UCAS  
support**

**Subject  
choices**

# What next? Finding the right path for you.

- **Research** Further Education courses at local sixth forms or colleges. Take a note of their application deadlines.
- **Attend** upcoming college and sixth form open evenings.
  - What type of course and which level is it?
  - What are the entry requirements?
  - Which subjects and skills do you need to demonstrate?
  - Which career could this course lead you to?
- **Sign up** to apprenticeship vacancy job alerts
  - [www.gov.uk/apply-apprenticeship](http://www.gov.uk/apply-apprenticeship)
  - [www.careerfinder.ucas.com/jobs/apprenticeship/](http://www.careerfinder.ucas.com/jobs/apprenticeship/)

# What next?

## Application timeline





[www.makehappen.org](http://www.makehappen.org)



<https://nationalcareers.service.gov.uk/>



<https://amazingapprenticeships.com/>

**T-LEVELS**

<https://www.tlevels.gov.uk/students>

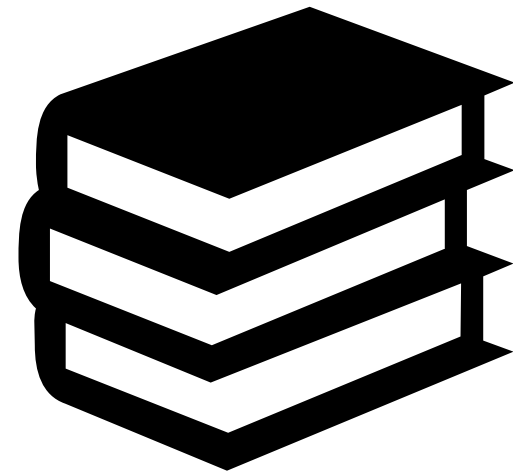
## Useful links

# Miss Chamberlain KS4 Co-ordinator for English

**ChamberlainG@bromfords.essex.sch.uk**

Miss Carter  
Head of English

CarterJ@bromfords.essex.sch.uk





# Year 11 English

## English Language 8700

8700/1	Explorations in creative reading and writing
8700/2	Writers' viewpoints and perspectives
8700/C	Non-exam assessment: Spoken language

## English Literature 8702

8702/1	Shakespeare and the 19 <sup>th</sup> century novel
8702/2	Modern texts and poetry

# English Language

## Paper 1 Explorations in creative reading and writing

- 5 questions in total.
- 4 questions on reading an extract from a text of creative writing.
- Question 5 requires a piece of creative/descriptive writing

## Paper 2 - Writer's viewpoints and perspectives

- 5 questions in total
- There will be 4 questions on 2 non-fiction sources
- Question 5 entails a piece of writing according to the form required

**AQA board – two exams for Language = One GCSE**

# Examination in Spoken Language

*Awarding Body: AQA*

## **Non-exam assessment**

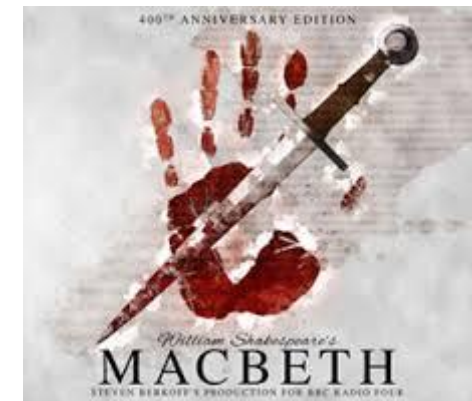
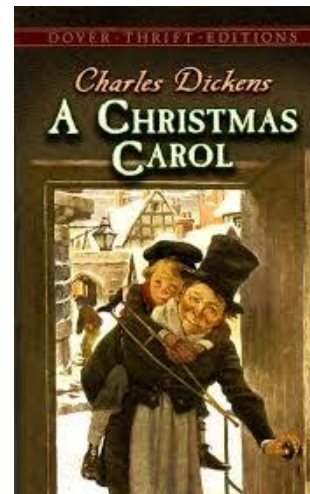
The aim of the assessment is to allow students to demonstrate their speaking and listening skills by:

- giving a presentation in a formal context
  - responding appropriately to questions and to feedback, asking questions themselves to elicit clarification
  - using spoken Standard English.
- 
- The assessment will be separately endorsed.

# English Literature Exam 100% examination

## 2 Exams:

- Poetry Anthology: Power and Conflict
  - Unseen Poetry
  - Shakespeare's Macbeth
- Dickens' A Christmas Carol
  - Lord of the Flies



# What did my child study in year 10?

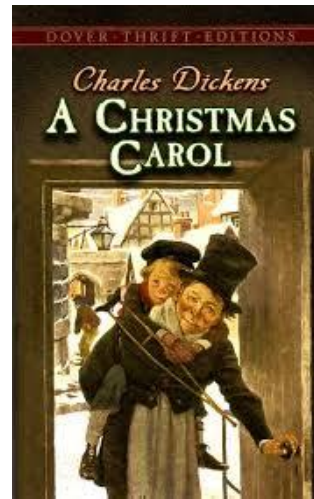
## Autumn 1 -

- Power and Conflict poetry
  - Remains
  - War Photographer
  - Poppies
  - Kamikaze
  - Charge of the Light Brigade
  - Exposure
  - Bayonet Charge

Oct  
half  
term

## Autumn 2 -

- A Christmas Carol by Charles Dickens



Christ  
mas  
break

## Spring 1 & 2 -

- Lord of the Flies by William Golding



Easter  
break

## Summer 1 & 2 -

- Macbeth by William Shakespeare



# What will students cover in year 11?

## Autumn 1-

- Revision of Macbeth
- Revision of Power & Conflict poems studied in Year 10
- Practise skills for Unseen Poetry
- Revisit Language Paper 1



Oct  
half  
term

## Autumn 2-

Using class and homework, you will cover:

- Revision of A Christmas Carol
- Language Paper 2



Christ  
mas  
break

## Spring 1 -

Power and Conflict poetry:

- Ozymandias
- London
- The Prelude
- My Last Duchess
- Storm on the Island
- Tissue
- The Emigree
- Checking Out Me History



Feb half  
term

## Spring 2 -

GCSE Literature  
Revision of key  
extracts/scenes/charac  
ters from texts

- Macbeth
- A Christmas Carol
- Lord of the Flies

GCSE Language  
Revision for both  
papers

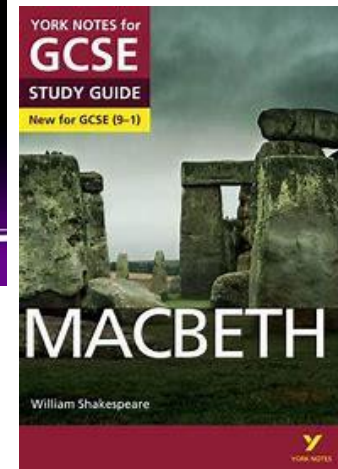
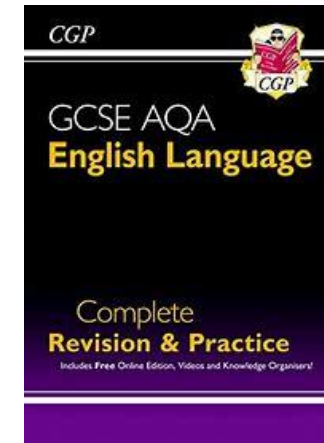


# How can I support my child at home?

What do I need to know?	How can I support my child?	What do I need to know?	How can I support my child?
Students are expected to read and understand a range of both fiction and non-fiction texts	Read short stories and newspaper articles together and discuss your opinions of them  CGP revision guides	Students will not have copies of the texts to refer to in the exam	Put quotes around the house! Ask your child about the texts they are studying – the best way to learn something is to teach it!
Exam texts will have some sophisticated vocabulary that many students will find challenging	Look, cover, write, check!	Students need to have a good knowledge of the key themes and ideas presented by the writers	Discuss the issues that are presented and talk about why/how they are still relevant today.
Students must be able to explain what the purpose of a text is and identify the attitudes of a writer	Practise this skill on newspaper extracts or even apply it to other things like TV adverts by asking questions like: <ul style="list-style-type: none"> <li>• Who is this targeted at?</li> <li>• How do we know?</li> <li>• What words/phrases/ideas are used to persuade the audience?</li> </ul>	Understanding the different methods writers use to convey meaning is the key to success for this exam	Revision guides: CGP York notes
		Students must understand how we read and analyse poetry – this includes the use of subject terminology	<b>Ensure your child attends the enrichment sessions when invited.</b>  Encourage your child to speak to their teacher if they are worried about the exams.

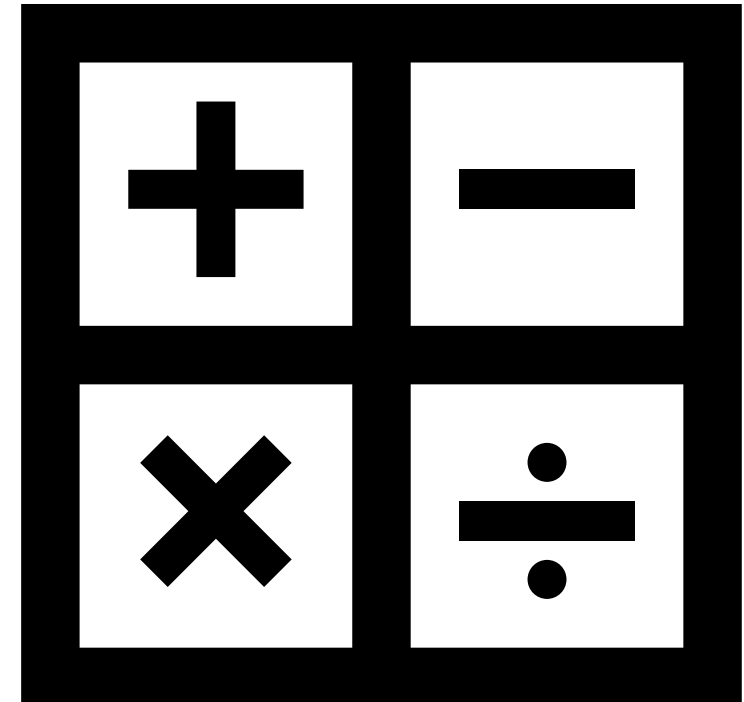


The Learning Program



**Ms Moss**

**KS4 Co-ordinator**





There have been no fundamental changes to the Mathematics qualification

- **There is more content at both Foundation and Higher Tiers**
- **Pupils will be assessed on all subject content at the end of the Mathematics GCSE course**

Content:	F	H
• Number	25%	15%
• Algebra	20%	30%
• Ratio, proportion, rates of change	25%	20%
• Geometry	15%	20%
• Probability and statistics	15%	15%

# Assessment structure

<b>Paper 1</b> <b>33.3%</b>	<b>Paper 2</b> <b>33.3%</b>	<b>Paper 3</b> <b>33.3%</b>
Non-calculator	Calculator	Calculator
80 marks	80 marks	80 marks
1 hr 30 mins	1 hr 30 mins	1 hr 30 mins

*Assessments will be linear examinations.*

*All papers may assess any content domains*

# Edexcel GCSE (9-1)

## Grade Boundaries June 2023

Mathematics													
Overall grade boundaries			Max Mark	9	8	7	6	5	4	3	2	1	U
1MA1	Mathematics (Foundation) Paper(s) 1F 2F 3F	Subject	240					182	147	109	71	33	0
1MA1	Mathematics (Higher) Paper(s) 1H 2H 3H	Subject	240	203	174	145	112	79	47	31			0

Foundation Paper	
Grade	Percentage
Grade upper 3 to 5	50 %
Grade 1 to lower 3	50%

Higher Paper	
Grade	Percentage
Grade 7 to 9	50 %
Grade 4 to 6	50%

# Maths sets

<b>Higher GCSE</b>	
Sets 1 and 2 will be studying the higher GCSE course.	Exam paper Grade 4 - 9
Sets 3 and 4 will be studying the foundation GCSE course	Exam paper Grade 1 - 5

## **Assessments**

- Students will be sitting two sets of mock exams
- The first set of mocks will be in October
- These Mocks allow the Students and class teachers to assess their current working grade and highlight areas of strengths and weakness. Students will use this information to focus and strengthen their key areas.

# What can your child do?

## HOMEWORK!

- Your child will be given two pieces of homework every week.
- It consists of a revision exercise on Sparx maths and a GCSE Exam paper.
- The Sparx maths will consist of questions for the students to answer, with a video lesson to assist them.
- Instructions on how to access Sparx maths can be found on the [school web page under remote learning](#)
- The GCSE exam paper allows students to revise each week and will show how your child is making progress.
- Your child will receive weekly feedback on their homework to help with their progress.
- IT IS **ESSENTIAL** YOUR CHILD COMPLETES THESE HOMEWORKS
- IT IS **ESSENTIAL** YOUR CHILD SPEND MORE THAN 5 MINUTES COMPLETING THESE HOMEWORKS.
- Pupils should use revision resources and staff in the department to seek help if they need it.

# KNOW YOUR CALCULATOR



- There are two calculator papers in the final exam.
- That is over 60% of their final available marks.
- It is essential your child gets a calculator **NOW !!!!!**
- **Your child needs time to learn how to use their calculator and its functions.**
- It will give them a better chance on the calculator paper.

## USE THE INTERNET CONSTRUCTIVELY

If you find yourself really struggling with a topic, there is plenty of help online. YouTube is a particularly useful resource in this respect:

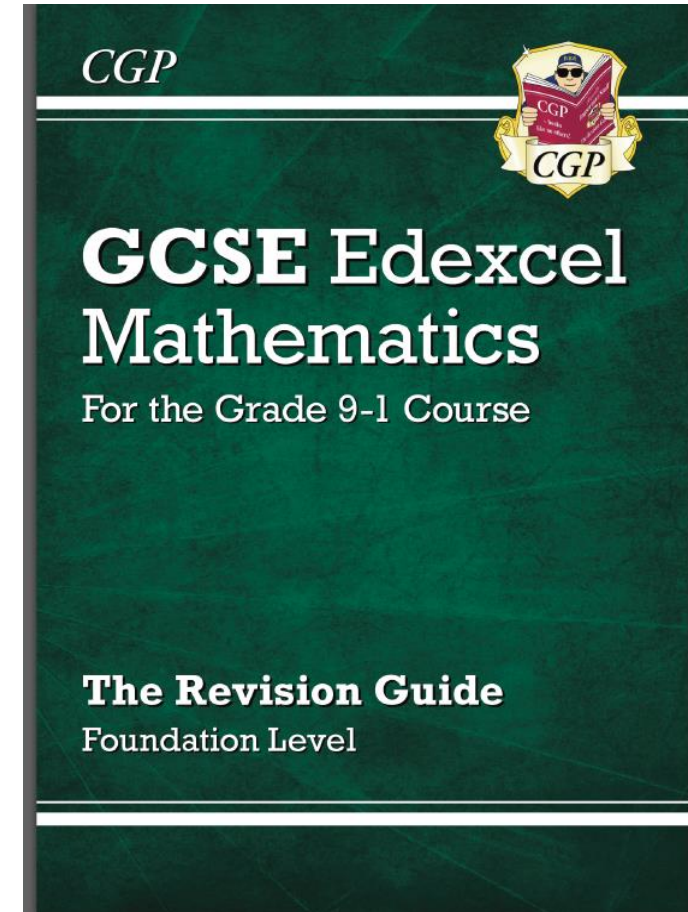
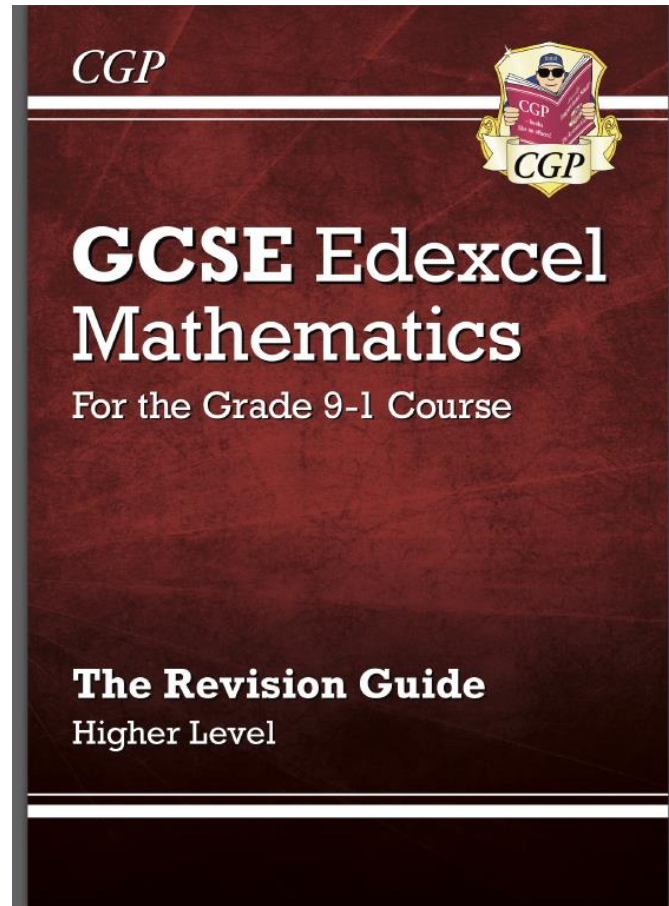
WEBSITE	
Sparx Maths	<a href="#">Sparx Maths</a> Students login is the same as their school login Any issues please speak to your class teacher
Pearsons Qualifications: Past papers, sample papers	<a href="https://qualifications.pearson.com/en/home.html">https://qualifications.pearson.com/en/home.html</a>
YouTube Type in the topic you need help with.	<a href="#">YouTube</a>
GCSE Pod	<a href="https://www.gcsepod.com/">https://www.gcsepod.com/</a> Students have their own personal logins
Corbett Maths	<a href="https://corbettmaths.com/">https://corbettmaths.com/</a>
MATHS Genie	<a href="https://www.mathsgenie.co.uk/">https://www.mathsgenie.co.uk/</a>

# REVISION

- The important thing to recognise when revising maths is that it's a discipline that depends on understanding.
- Unlike most other subjects, memorising and parroting answers isn't going to do the job.
- There are only a finite number of topics, so the best thing that you can do to prepare before the exam is to rehearse as many as possible.
- REMEMBER the best technique is to **PRACTISE, PRACTISE, PRACTISE**. The exam paper we are giving them will support this
- Past papers are the obvious solution, as they are a good indicator of the standard required.
- Prioritise the questions that you frequently get wrong. Challenge yourself sooner rather than later, and do a little bit of the harder stuff every day up until your exam; you'll pick it up a lot quicker than you'd think.
- **MAKE SURE YOU KNOW WHICH FORMULAE WILL NOT BE GIVEN AND LEARN THEM**
- Plugging values into a formula is an easy way to pick up marks, so make sure you don't lose out due to lack of knowledge. The formulas are very easy to memorise. Either stick them up around your bedroom, or write them out repeatedly until they are ingrained.

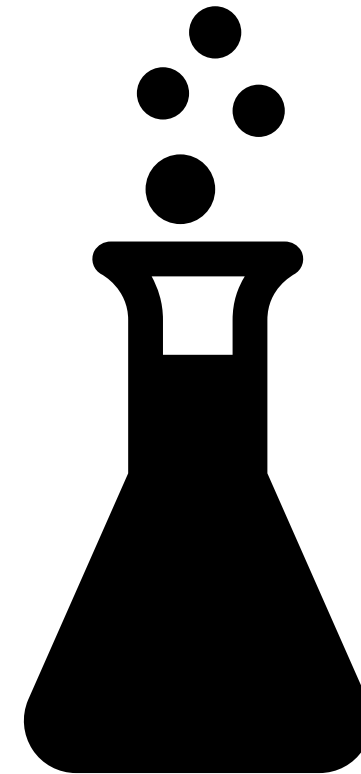


# Useful Revision Guides



**Mrs Rachael Kemp**

**Head of Science Faculty**



# Science - Course Structure

*Awarding Body: AQA*

There has been little change in the assessment and qualifications in Science. Please be aware that there are 2 different qualification routes and any revision/resource materials must be for the correct course and tier for your student.

Course of Study	Qualification Received	Hours of Study per Fortnight	Assessment Format	Exam Details
Combined Science: Trilogy	2 GCSEs – These cannot be separated	10 hours 3 Biology, 4 Chemistry, 3 Physics	A total of 6 exam papers in June/July, 2 in each branch of science. Each paper is 75 minutes long	Higher tier – Grades 4 to 9 Foundation Tier – Grades U-5
Separate Sciences	3 GCSEs – Counted as separate qualifications but students cannot elect to take or drop a combination of these.	10 hours 3 Biology, 4 Chemistry, 3 Physics	A total of 6 exam papers in June/July, 2 in each branch of science. Each paper is 105 minutes long	Higher tier – Grades 4 to 9 Foundation Tier – Grades U-5

# Science – Required Equipment

*Awarding Body: AQA*

Every Science class, on all courses and subjects will require students to have with them all standard items of equipment.

Students will need to bring their calculator to every lesson and this can be used in their final exams.

In Physics lessons, students will need to be memorising 23 standard equations. We highly recommend the App '23 Equations' which is free and will help students rearrange and apply each equation and its given units of measurement. This is to be used off site as per our school Mobile phone policy.

# Science – Homework and Support

*Awarding Body: AQA*

All students in Science will receive weekly homework. In Separate Sciences this will be one piece per week for each GCSE subject.

In all Science classes homework will be set on ClassCharts, and may require computer/ phone access and can be supported in our intervention classes.

Name: Biology Exam Questions - Unit 1

Issued: 11/9/2023 | Due: 22/9/2023 | Mrs Clementine Chapell | Science | 11a/Sc1 | Created: 7/9/2023 | Type: Homework

Hello all,

You need to work through the exam questions provided. They are retrieval practise for Unit 1.

Please complete either higher or foundation depending on your tier of entry. Any questions about whether you are higher or foundation please speak to your Biology teacher(s).

These should take 30 minutes approximately. These will be checked the WB 25/9/23. The last question will be marked together as a group using a marking grid, please come to class ready to mark your question and receive feedback.

If you have any questions, remember you can speak to any Science teacher who will happily help you.

B1HomeworkF student.doc

B1HomeworkH student.doc



# Science – Reading Material & Support

Awarding Body: AQA

## Reading Materials

CGP Revision guides are available on Parent Pay at a reduced price. Please purchase the correct Tier version, teachers can advise which tier is suitable.

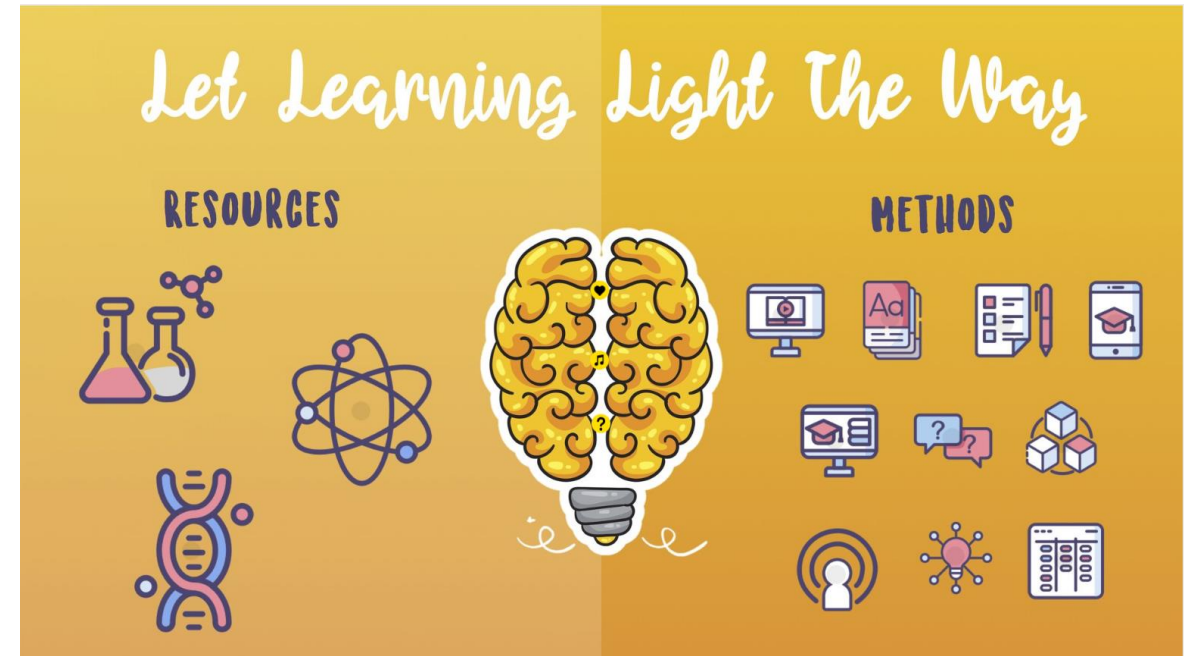
Revision sessions

GCSE pod for students to assess – Videos and Quiz Qs

Tassomai – Tailored intervention for grade growth (Live Oct 23)

Other recommended services: [BBC Bitesize](#), [Khan Academy](#), [Seneca Learning](#), [Save my Exams](#) and [Physics and Maths tutor](#)

## [Science Revision Hub](#)



Each icon is a button that will give students 100's of resources including answers to use in their revision. This was sent via email in June and has and will be shown to all students. There are also resources and information about how to revise effectively.

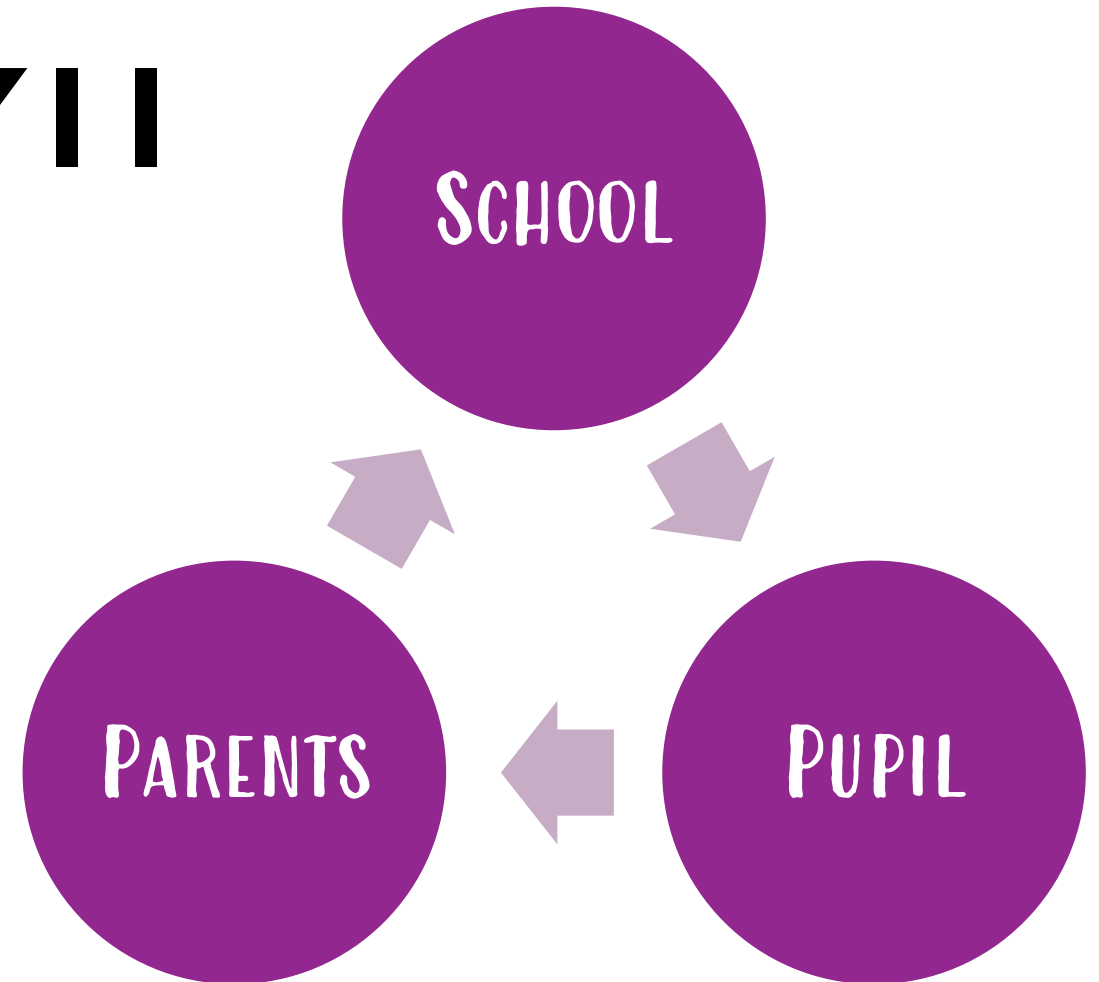
# Aims for this evening

- Provide a brief overview of the new grading system and how the courses will be assessed
- Sixth Form at Bromfords
- To provide guidance on how you can support your child in:
  - English
  - Maths
  - Science
- To outline expectations of students
- Suggest ways in which parents can support students to reach their full potential in this final chapter of their GCSE study

## Partnership

# Being Successful in Y11

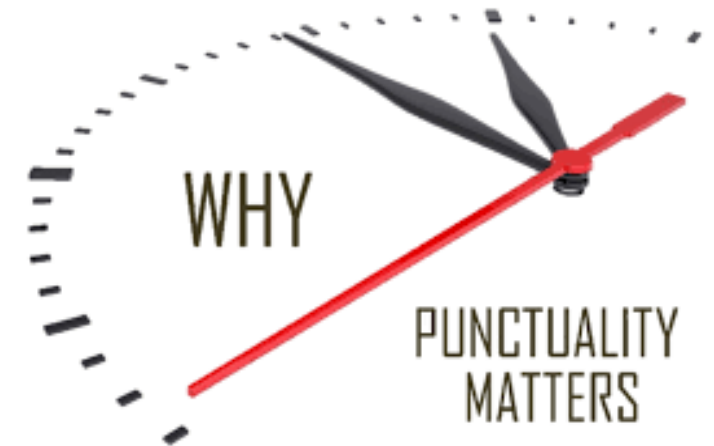
- Ensuring success for all
- Raising aspirations
- Un-locking potential
- Supporting students to believe they can achieve.





# Poor attendance affects the chances of doing well in school

- Research suggests that **17 days missed** from school equates to a **whole GCSE grade**
- That's a **91%** attendance rate



# Students with 100% Attendance:

- 1.3 times more likely to achieve Grade 4 or above and 3.1 times more likely to achieve Grade 5 and above
- 2.2 times more likely to achieve 5+ GCSEs Grade 4-9 or equivalent including English and Maths

**There is a clear link between poor attendance and level of achievement**

# Homework

- Demands have increased
  - Approx. 1.5 hour a week per subject
  - Quality is important
  - Ask for help
- ClassCharts
  - Download the app, ask for a login if you don't have one
- Teams
  - Students need to download the app as well - regular access to revision resources and additional support
- Regular routine
  - Time management is crucial to meet deadlines



# ClassCharts (formerly EduLink)

- Online access for parents/guardians with information about their child's education
- Timetable
- Homework
- Behaviour records
- Attendance
- Reports and target grades



# Academic Support

Tutor curriculum with designated programme with:

- 'Raising our Game' initiative - Core subject Masterclasses
- Careers Information & Guidance
- Well-being
- Teaching staff will provide subject specific topic lists, resources and revision tips
- Academic monitoring and intervention as required



# Engagement with Intervention

- Students that engage with academic support and intervention on average achieve over half a grade higher than their target grade.

For example:

Target = 4=



Final grade = 5-



# How Can Parents Help?



- Be aware of what they are studying, what exams are due to take place and when
- Encourage and motivate them – ask questions and be interested in what they are learning
- Support them with a routine - Ensure they are in school on time ready to learn
- Monitor their ClassCharts to keep them on-top of homework
- Encourage them to be a reader. Being a regular reader means that students will be able to access ALL exam papers, not just English, better
- Ensure they have all the necessary equipment and revision guides/materials
- Keep calm (or at least pretend to be!) – there is always a way forward

# Well-Being – Stress it will happen! (For you and them)



## Potential signs of Stress:

- Wants to be alone
- Has difficulties sleeping
- Loss of concentration
- Emotional
- Loss of self-esteem
- Feelings of depression
- Short tempered and snappy
- Suffer with headaches
- Refusing to complete work

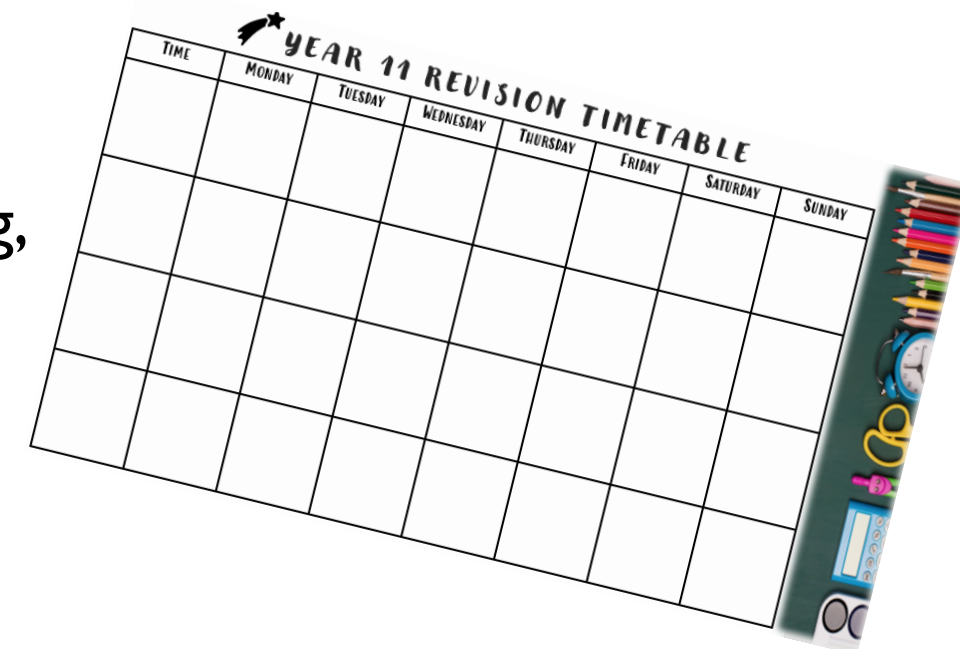
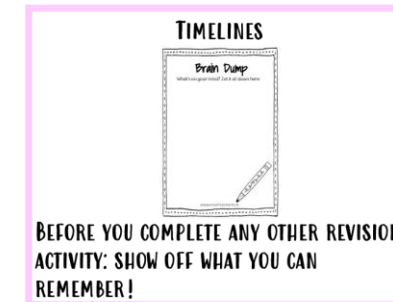
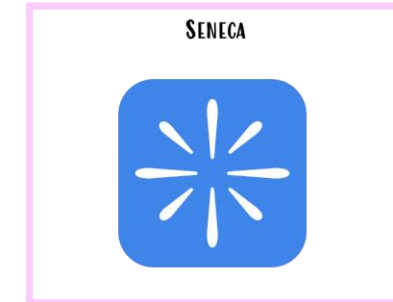
## Some ideas of coping strategies:

- Establish a routine and stick to it
- Keeping active
- Healthy diet
- Regular breaks
- Limiting time on social media/technology
- Build variety into the revision schedule to avoid boredom
- Do timed practice papers
- Research shows that simply talking to your child about their work can make a difference



# Revision & Exam Preparation

- Start NOW!
- Ensure they have all the necessary equipment and revision guides/materials
- Recognise their strengths but keep your expectations high.
- Recognise areas for development and make sure the expectations are manageable for all of you.
- Keep in touch – whether it be at Parent's Evening, with Form Tutors, subject teachers or other relevant staff.
- See the information pack for more techniques



# Revision & Exam preparation

## Beating Procrastination

Too much work

Break work  
down

Write a list

I don't like it

Study groups

Incentive  
system

Lack motivation

Set clear and  
compelling goals

# Helpful Apps & Websites



# Thank you for your continued support



**THE BROMFORDS SCHOOL**  
ACHIEVE ENRICH PREPARE

The next few months will be challenging, but we are confident that Year 11 students will step up to the challenge and do themselves, their families and the school proud.

Success for all is the main aim which we will achieve when we work together.